

**ANNUAL REPORT COVER SHEET**  
**Annual Report, Fiscal Year 2003**  
**July 1, 2002 to June 30, 2003**

Name of Community Empowerment Area: Siouxland Human Investment Partnership (SHIP)

Counties/Area Served: Woodbury County

Website: [www.siouxlandship.org](http://www.siouxlandship.org)

Board Chairperson: Linda Krei

Fiscal Agent: Siouxland Human Investment Partnership

Signature: \_\_\_\_\_

Signature: \_\_\_\_\_

Address: 801 5th St.  
Sioux City, Iowa 51101

Address: 1520 Morningside Ave.  
Sioux City, Iowa 51106

Phone: 712-279-2383

Phone: 712-274-6000 ext. 6364

FAX: 712-279-2034 \_\_\_\_\_

FAX: 712-274-6115

Email: [krei@mercyhealth.com](mailto:krei@mercyhealth.com)

Email: [calhounj@aea12.k12.ia.us](mailto:calhounj@aea12.k12.ia.us)

Federal ID Number: 42-1495836

Contact Person for the Community Empowerment Area: John F. Calhoun  
(if different from the Chairperson)

Address: 1520 Morningside Ave., Sioux City, Iowa 51106

Phone: 712-274-6000 ext. 6364

FAX: 712-274-6115

Email: [calhounj@aea12.k12.ia.us](mailto:calhounj@aea12.k12.ia.us)

**Executive Summary  
Showcase  
2002**

The Siouxland Human Investment Partnership (SHIP) is the Empowerment Board for Woodbury County.

Contact: John F. Calhoun

Address: 1520 Morningside Ave., Sioux City, Iowa 51106

Phone: 712-274-6000 Fax : 712-274-6115

E-Mail: [calhounj@po2.aea12.k12.ia.us](mailto:calhounj@po2.aea12.k12.ia.us)

Web : [www.siuoxlandship.org](http://www.siuoxlandship.org)



**Early Childhood Mission**

To strengthen, support and empower children and families through access to quality community services.

**Early Childhood Vision**

Guided by current research on brain development and supported through meaningful collaboration, our community will provide opportunities for children 0 to 8 to be healthy and ready to learn.

**Plan Overview**

All of the programs and services provided under this plan are specifically tied to achieving positive results and outcomes related to our established priorities at the local level, which directly relate to the State Indicators identified by the Iowa Empowerment Board. In this plan we outline a series of programs and services that are based upon a consensus of local early childhood experts within Woodbury County. The Woodbury County Early Childhood plan has been focused on the 0 to 8 population. However, this application specifically focuses on the State of Iowa identified population of 0 to 5.

The development of the Rural and Urban Family Resource and Referral Centers and the In Home Visitation Services is provided participating families with nutrition education. Although the focus of the programs provides children ages 0 to 5, nutrition education is provided to the parents of those children. This education has a positive affect on the children currently in the household and also helps to reduce the number of low birth weight babies born to the parents participating in these programs. Another main focus of these programs is to gain established medical homes for the children ages 0 to 5. If the children and families have established medical homes the rate of immunization by age 2 will greatly increase.

The goal for the Woodbury County School Ready Plan is to have children entering kindergarten ready for school through prior preschool/group experience. This is the focus for the Rural and Urban Family Resource Centers and the public awareness, education and forums conducted by members of the Early Childhood Committee.

## Woodbury County Early Childhood Indicators

### Healthy Children:

1. # of children with established medical homes
2. # of children with established dental homes
3. # of children with medical insurance
4. # of identified at-risk families accessing the early intervention program

### Children Ready to Succeed in School:

1. # of children entering kindergarten who have had pre-school/group experiences
2. # of licensed child care center/preschool slots
3. # of infants served in child care centers or registered child care homes

### Safe and Nurturing Families:

1. # of families participating in family support services

### Secure and Nurturing Childcare Environments:

1. # of accredited childcare centers
2. # of registered child care homes

### Primary Services

The primary services provided for in the Early Childhood plan have focused on increasing the availability of quality child care. A new process of allocation based on accreditation has been implemented to provide scholarships for licensed child care to children of families that are within the 140 to 185% of poverty. SHIP has also provided funding to increase the quality of child care by partnering with Western Iowa Tech Community College to offer scholarships for professional development of child care workers. In addition, the board has awarded funds for Rural and Urban Resource and Referral Centers. Funding has also been provided to increase the number of infant care openings within the County and extended day care.

### “Showcase” of Cooperation/Collaboration

SHIP has formed many partnerships within the Early Childhood community including Success By 6®, HOPES and Shared Visions. Success By 6® is an early childhood development model created by the Mobilization for America’s Children and adopted by local United Ways and Communities across the country. Success By 6® has been engaged to serve as the review committee for all Early Childhood programs and has also agreed to provide the marketing for the Early Childhood Plan. A formal memorandum of agreement has been developed and the new combined collaborative is called Success By 6® and Beyond. Success By 6® and Beyond has initiated involvement in the Imagination Library through the Dollywood Foundation. This project will allow all children born in Sioux City hospitals to receive an age appropriate book a month for 5 years. Success By 6® and Beyond will utilize the Every Child Reads team to serve as the evaluation component of this program. Additional success includes the partnership with the HOPES providers within the County. HOPES will also provide the coordination for the rural and urban resource centers to ensure the elimination of duplication. Success By 6® and Beyond has initiated a process to develop a “Transition to Kindergarten” collaborative consisting of all schools and pre-schools within Woodbury County. This collaborative will develop one transition plan for Woodbury County.

**SECTION I – Community Empowerment Board Composition**

A. Number of Board Members (Board Size) 22

B. Membership Identification. Complete a table similar to the one shown below.

Column 1 – Identify chairperson, officers' titles i.e., vice-chair, secretary, treasurer (as determined by your local board)

Column 2 – Identify each board member, starting with Chairperson

Column 3 -- Identify representation of each person. Representation shall include Human Services, Education, Health, Consumer, Faith, Business.

Column 4 -- Identify each person as citizen, elected official or other. Board composition must be a minimum 51% citizen or elected officials.

<b>Column 1</b>	<b>Column 2</b>	<b>Column 3</b>	<b>Column 4</b>
<b>Name</b>	<b>Representation</b>	<b>Other Community Affiliations</b>	<b>Citizen/Elected/Other</b>
Linda Krei-Chair	Health	Vice President Human Resources and Organizational Development-Mercy Medical Center, Sustainer Member-Junior League of Siouxland, Morningside Lutheran Church, Mercy Medical Center-Foundation and Development Committee, Mercy Medical Center Quality Committee, Mercy Medical Auxiliary and Administrative Liaison, Downtown School Task Force	X
Doug Harrold-Vice-Chair	Comp Strategy	Juvenile Home Education Coordinator, Comprehensive Strategy Council, Residential Educators of Iowa, Specialized Services Workgroup-Iowa Dept. of Education, Success 4, Phi Delta Kappa,	X
Fran Sadden-Secretary	Health	Director-Siouxland District Health Department-ALPHA, Iowa Nurses Association, American Nurses Association, Iowa Public Health Association, Sioux City Rotary, Sigma Theta Tau, Iowa SIDS Alliance	
Pat Penning-Treasurer	Human Services	Service Area Manager-Sioux City DHS Region	
Mauri Welte	Bd. of Supervisors	Highway 20 Corridor Association Board, Loess Hills Alliance Board, Mental Health II County Consortium Board	X
Audra Cole	Provider Coalition	Clinical Director-Catholic Charities, Mary Treglia Community House Board Member, Member of NAACP, Child Advocacy Board, AIDS Coalition, Comprehensive Strategy Council	X
Roger Hess	Education	Executive Director-Western Hills AEA, Opportunities Unlimited Neighborhood Advisory Board, Phi Delta Kapa, Holy Family School Advisory Board	

Linda Drey	Health	Iowa Public Health Association, Sigma Theta Tau International Honor Society of Nursing, Comprehensive Strategy Council, Health Siouxland Initiative, American College of Health Care Executives, Association of Community Health Improvement	
Richard Caldwell	Education	Superintendent-Sgt. Bluff-Luton Community School District, SAI, Kiwanis, Junior Achievement, AASA	
Joyce Kizzier	Education	Board President-Woodbury Central Schools, Moville Cub Scouts 259-Cub Master, Moville Towne Players-Friends of the Theatre	X
Pamela Schultz	Youth	Band, Choir, Choir Accompanist, Jazz Band, Ladies of Vocal Excellence, SBL District Advisory Committee, GOAT, Methodist Church Choir & Youth Group, Pioneer Valley & Sgt. Bluff-Luton Players	X
Caroline Donaway	Education	Migrant/E.S.L. Coordinator, The Center Board Member, Advisory Council of La Casa Latina	X
Dave Ferris	City Council	Co-Owner-Sneaky's Chicken	X
Tim Stiles	Business	United Way Director, Junior Achievement Board, Rotary Board, Leave-A-Legacy Co-Chair	X
Pastor Kevin Lee	Faith	Youth For Christ, Siouxland United for Christ	X
Connie Barrett	Human Rights	Siouxland Council of Networking Agencies, ARC, Alliance for the Mentally ill, St. Luke's Handicapped Group, Hearing Impaired Parent Support Group	X
Mike Stiles	Health	Chancellor-St. Luke's College, Chair-Board of Directors-Telco-Triad Community Credit Union, Board of Directors-Ronald McDonald House of Sioux City, CSA & DV Board of Directors	X
Jim Rouse	Education	Superintendent-Catholic Schools of Sioux City, National Catholic Education Association, National Association of Secondary Principals, Association for Supervision and Curriculum Development, Regional and State Administrators Association	X
Larry Williams	Education	Superintendent-Sioux City Community School District, Rotary Club, Red Cross, Junior Achievement, St. Luke's Hospital Board Chair, Urban Education Network of Iowa Chair	
Becky Krohn	Citizen	Woodbury County Extension Council Member, United Way of Siouxland, Salvation Army Board Member	X
Gary Niles	Juvenile Justice	Chief Juvenile Court Officer-3 <sup>rd</sup> Judicial District, Siouxland Cares Board, Member Child Welfare Redesign, Catholic Grade School Athletic League, Chairman-Ranat Development Com., Consultant-National Assn. of Drug Court Professionals	
John Reynders	Morningside College President	National Association of Independent Colleges & Universities, Council of Independent Colleges	X

## Section II-Collaborative Efforts

### A. Narrative Report

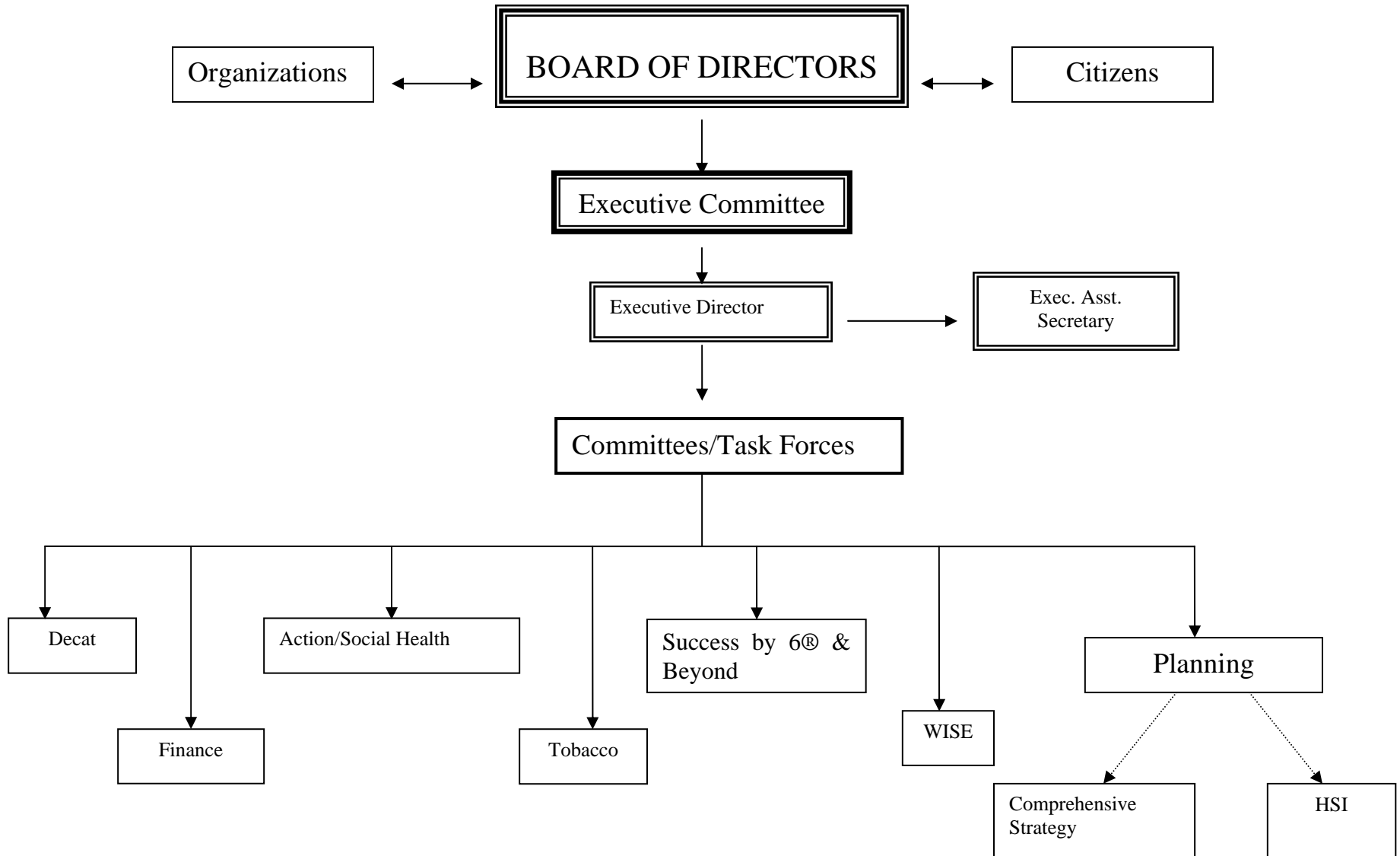
- SHIP has invited the entire community to join in the early childhood planning process. Initially, SHIP held a public forum to get input from the community in addition to inviting them to the planning process. Everyone that attended continues to get communication from SHIP regarding the on going planning process and inviting them to the table. Success By 6® is open to anyone that wants to be involved. It is a very inclusive process.
- **Communication, planning and interaction-**The Siouxland Human Investment Partnership communicates with the community in several different ways. SHIP has had several press conferences and releases to promote activities surrounding early childhood issues. All Early Childhood information is posted on the SHIP web site address @ [www.siouxlandship.org](http://www.siouxlandship.org) . SHIP has added the capability of doing on line surveys to the web site and utilizes this feature to gather information from the community.
- **Healthy Families Iowa (HOPES)-**The Siouxland Human Investment Partnership (SHIP) works very closely with the HOPES program. The SHIP Director and/or the Executive Assistant attend the monthly HOPES meetings. These meetings are used for a multiple effect upon the early childhood system. The meetings always contain an educational/training format for all staff involved with HOPES and collateral agencies as well. The second phase of the meeting is to coordinate the services of the four participating HOPES agencies. The agencies share information on available openings for referrals, staff development issues and valuable contact information. The HOPES program is also used to coordinate the Resource and Referral Centers that are funded through the Empowerment School Ready funds. The HOPES program is a collaborative between four (4) private non-profit providers and the two (2) local Hospitals.
- **Shared Visions-**Woodbury County has two Shared Visions programs. These programs are located at the Native American Child Care Center and the Woodbury County Community Action Agency. In addition to meeting individually with these agencies, both of them are involved in the SHIP Early Childhood Committee. The Early Childhood Committee is responsible for developing the Early Childhood Plan for Woodbury County and monitoring the implementation of the Plan.
- **Success By 6®-**Woodbury County is fortunate to have a Success By 6® program. This program is coordinated by the Siouxland United Way and has been very successful. Success By 6® representatives have been involved with the SHIP Early Childhood Committee and participating in the planning and monitoring. Success By 6® also coordinates the grant review committee that screens the applications for Early Childhood and School Ready funds provided through the Empowerment process. SHIP works very closely with Success By 6® to avoid duplication and enhance the utilization of existing resources. The SHIP Board has approved a memorandum of understanding with Success By 6® that forms an official partnership between the two agencies. Both entities have agreed to share resources and planning processes to ultimately provide the best possible services for children and families. This partnership is now named Success By 6® and Beyond and culminates a tremendous collaborative effort that will show the community the solidarity among early childhood issues.

United Way and Success By 6® and Beyond are partnering on the imagination library. The imagination library is a project that utilizes the DOLLYWOOD Foundation program to provide a book a month for five years to all children born in the Sioux City Hospitals. This initiative has an

evaluation component created by the Every Child Reads team. The Every Child Reads team has also trained the HOPES workers on how to teach parents how to read to their children

- **Early Access**-SHIP has facilitated the involvement of Early Access and the five Empowerment Areas that are served by the Early Access Region. All of these Empowerment Areas are now members of the Regional Committee that advises Early Access.
- **Every Child Reads**-SHIP is the coordinating board for the Every Child Reads Team in Woodbury County.
- **Kindergarten Transition**-SHIP is coordinating the effort to establish one comprehensive Kindergarten Transition plan for Woodbury County. This effort involves all 10 school districts and child care centers.
- **Connecting to Learn**- SHIP also sponsors the annual “Connecting to Learn” A Celebration of Children event at the Southern Hills Mall. This event consisted of agency displays of early childhood information, interactive games for children to play, story telling and book reading. Free books are distributed to children at this event This is a very effective way of getting valuable information to the public. SHIP is planning to have another of these events in the rural area in the fall and make these events an annual affair. This involves approximately 20 Early Childhood providers within Woodbury County.

B.



C.

- **Comprehensive Strategy**-Comprehensive Strategy is a community planning process that addresses the elimination of adolescent problem behavior. A large part of the plan to eliminate this behavior is related to prevention efforts targeted to early childhood. Success By 6® and Beyond has met with Comprehensive Strategy to discuss the similarities between the two plans. Success By 6® and Beyond has formatted the Early Childhood Plan in the same format for possible inclusion in future plans. These plans compliment each other and will eventually be melded into one comprehensive plan for Woodbury County.
- **Healthy Siouxland Initiative**-Healthy Siouxland Initiative (HSI) is the health planning collaborative in Woodbury County. The SHIP Director and Assistant to the Director are both involved in this planning process. HSI is also very determined not to duplicate planning efforts in the community. We have discussed and will enter into a process in the fall to bring all of these planning efforts together for coordination.
- **Decategorization**-Woodbury County previously had two separate boards performing administrative functions for Empowerment and Decategorization. However, these boards have now approved a memorandum of understanding that merges the Decat Board as part of the SHIP Board. The Siouxland Human Investment Partnership is now also the Decat board for Woodbury County.
- **SHIP Planning**-The SHIP Planning Committee continues to plan for the development of one Comprehensive Community Plan for Woodbury County. This process would bring together all other planning processes within Woodbury County.

D. All initiatives outlined in section C

**SECTION III – Linking Local Planning/Priorities to State Results**

- \*State Results:   A.    Healthy Children (Birth to 5)                               D.    Secure and Nurturing Families  
                           B.    Children Ready to Succeed in School                               E.    Secure and Nurturing Child Care Environments  
                           C.    Safe and Supportive Communities

<b>Local CEA Identified Needs/Priorities</b>	<b>Local Indicators</b>	<b>*To Which State Result(s) does Local Indicator Link (A – E)</b>
<ul style="list-style-type: none"> <li>• Increase the number of children with preschool/group experiences prior to kindergarten</li> <li>• To increase the quality of preschool and child care programs in Woodbury County</li> </ul>	<ul style="list-style-type: none"> <li># of children entering kindergarten who have had preschool/group experiences</li> <li># of licensed child care center/preschool slots</li> <li># of infants served in child care centers or registered child care homes</li> </ul>	A-B-C-E
<ul style="list-style-type: none"> <li>• Increase the percent of children with established medical homes.</li> <li>• Increase the percent of children with established dental homes.</li> <li>• Increase the percent of children with medical insurance.</li> </ul>	<ul style="list-style-type: none"> <li># of children with established medical homes</li> <li># of children with established dental homes</li> <li># of children with medical insurance</li> </ul>	A
<ul style="list-style-type: none"> <li>• Increase the number of individuals participating in family support services</li> <li>• Establish or strengthen community support, participation, interest and cooperation in developing priorities for all young children and their families</li> </ul>	<ul style="list-style-type: none"> <li># of families participating in family support services</li> <li># of identified at-risk families accessing the early intervention program</li> </ul>	C-D-E
<ul style="list-style-type: none"> <li>• Increase the number of accredited child care centers</li> <li>• Increase the number of infants served in child care centers or registered homes</li> <li>• Increase the number of registered child care homes</li> <li>• Increase access to affordable, quality child care/early education environments</li> </ul>	<ul style="list-style-type: none"> <li># of accredited child care centers</li> <li># of registered child care homes</li> <li># of infants served in child care centers or registered homes</li> <li># of licensed child care center/preschool slots</li> </ul>	B-C-E

**SECTION IV – Local Indicators**

Local Indicators (From Above)	Baseline Data (Include date and actual data)	Sub-Sequent Years Data (Trend Line)			Goal (Projected Timeline)	Progress Update (Analysis)
		FY01	FY02	FY03		
# of children with established medical homes  *	47% of the kindergarten children had a medical home. Baseline established in FY00 (source: kindergarten survey)	FY01-41%	FY02-46%	FY03-93% This is the percentage of 1054 children completing survey. In the past it was a percentage of the children enrolled	Increase by 27% over a five year period (2005)	We have completely re-done our indicators and changed the way that we collected information. Even though the change is for 04, the decision was made to report the 03 kindergarten survey in the 04 format.
# of children with established dental homes  *	43% of the kindergarten children had a dental home. Baseline established in FY00 (source: kindergarten survey)	FY01-38%	FY02-43%	FY03-88% This is the percentage of 1054 children completing survey. In the past it was a percentage of the children enrolled	Increase by 21% over a five year period (2005)	We have completely re-done our indicators and changed the way that we collected information. Even though the change is for 04, the decision was made to report the 03 kindergarten survey in the 04 format.
# of children with medical insurance  *	Baseline established in FY02 (source: Kindergarten survey)		FY02-43%	FY03-86% This is the percentage of 1054 children completing survey. In the past it was a percentage of the children enrolled	Increase by 5% over a five year period (2007)	We have completely re-done our indicators and changed the way that we collected information. Even though the change is for 04, the decision was made to report the 03 kindergarten survey in the 04 format.
Increase the number of children entering kindergarten who have had	41% of kindergarten children have had a preschool/group experience prior to entry (source: Kindergarten survey for		FY02-41%	FY03-83% This is the percentage of 1054 children completing survey. In the	Increase by 10% over a five year period (2007)	We have completely re-done our indicators and changed the way that we collected information. Even though the change is for 04, the decision was made to report the 03 kindergarten survey in the 04 format.

preschool/group experiences prior to entry *	FY02)			past it was a percentage of the children enrolled		
# of accredited childcare centers *	Woodbury County has 5 accredited child care centers (source: Child Care Resource & Referral-2000)	FY01-5	FY02-5	FY03-6	Increase 130% over a five year period (2004)	Several of the centers are working towards this goal.
# of registered child care homes *	64% of known child care homes are registered (source: Child Care Resource & Referral-1999)	FY01-75% of known child care homes are registered	FY02-75% (#252)	FY03-71% (#266)	Increase 21% over a five year period (2004)	
# of licensed child care centers/preschool slots *	Baseline established in FY-01 registered (source: Child Care Resource & Referral-1999)	FY01-Child Care Slots-2,209 Preschool Slots-390	FY-02 Child Care Slots-1,813 Preschool slots-611	FY-03 Child Care Slots-1586 Preschool slots-779	Increase 5% over a five year period (2005)	Woodbury County centers that would account for the decrease in child care slots. However, we continue to show an increase in 221 slots for pre-school.
# of infants served in child care centers or registered child care homes *	Baseline data established in FY01 (source: Child Care Resource & Referral)	FY01-Home slots=613	FY02-Home slots=682	FY03-Home & Center slots=852-	Increase 5% over a five year period (2005)	We have completely re-done our indicators and changed the way that we collected information. Even though the change is for 04, the decision was made to report the 03 Infant care slots in the 04 format.
# of families participating in family support services *	Baseline data: HOPES Program FY01-49	FY01-49	FY02-62	FY03-69	Increase of 10% over a five year period (2005)	The HOPES Program continues to experience positive results

**SECTION V – Early Childhood and School Ready – Evaluation Using Common Language Framework**

Early Childhood service provided	How Much Did We Put In? (Input)	How Much Did We Do? (Output)	How Well Did We Do It? (Quality/Efficiency)	What Difference Did It Make? (Outcome)
Child Care Scholarships to children between 140% & 185% of poverty for children 0 through 5	\$182,551.33	7 grants to child care centers in Woodbury County	Provided child care scholarships Baseline FY00-0 FY01=167 FY02=130	Increased access to quality child care centers for families between 140% & 185% of poverty for children 0 through 5.
Extended day care *	\$27,541-Empowerment \$1,246-CACFP Funds \$97,268-Head Start Funds 1 FTE	Contract with Woodbury County Community Action to provide extended daycare hours	Increase capacity for child care by Baseline FY00 FY 01=21 FY02=24 FY03=19	Increase access to quality child for families that need extended child care hours. This program also provides a continuity of care.
Center Based Infant Care	\$19,514 2 FTE Caregivers 2 .5 FTE *Funds other than Empowerment were used in the program.	Contract with the Children’s Center for Infant care(0-24 months) including children with special needs.	Increased capacity for center based infant care: Baseline FY00-0 FY01-39 FY02-36	Increased access to quality center based infant care. Without this grant infant care could not be accessed due to high cost to parents.
In-home Infant Care- provides recognition and rewards for in-home infant care providers for accomplishments in reaching quality goals. *	\$25,000 Empowerment \$1,750 Other funds	Contract with Child Care Resource and Referral	Quality has increased for in-home infant care providers due to incentives received for high level infant care training. FY02-6 point redemptions FY03-16 point redemptions 309 visits/contacts made 66 providers enrolled	Providers were able to obtain resources and materials to expand quality in-home infant care slots. Increase quality interactions of caregiver to infant.
Professional development (WITCC)	\$12,000	Provided contract to child care providers to allow for professional development & staff training	Professional development provided Baseline FY01-79 child care workers received professional development FY02-107	Child care workers continue to receive training which will increase the quality of child care.
Training	\$23,410			

School Ready service provided	How Much Did We Put In? (Input)	How Much Did We Do? (Output)	How Well Did We Do It? (Quality/ Efficiency)	What Difference Did It Make? (Outcome)
HOPES	\$54,000  *	Contract with the Crittenton Center, who sub-contracts with 3 additional agencies to provide HOPES services to a projected total of 40 families. -556 Home visits -12 months average length of program participation -1864 pregnant/newborns screened for risk. -7.6% eligible enrolled in HOPES-HFI model program	Provided in-home services Baseline FY01-49 families served with Empowerment funds FY02-62 families served with Empowerment funds FY03-69	Within 1 year of entering the HOPES program, 91% of families successfully addressed and consistently met the identified safety risks listed on the Home Assessment form.  Within 2 months of entering the program, 100% of all children had medical homes  Within 6 months of admission to the program, 100% of children received age-appropriate immunizations and well-child medical examinations.  Within 9 months of entering the program, 59% of the parents met the criteria to advance one level.
Resource Centers	\$202,379.03	Contracts with River Valley Schools, Sgt. Bluff Luton School, Siouxland District Health and the Crittenton Center to create Resource & Referral Centers	Provided services Baseline FY00-0 FY01-1705 clients served FY02-1424	Assisted families in supporting the growth & development of their young children by providing information, referrals and educational opportunities. A parental survey is being developed to measure the difference being made.
Public Awareness	\$27,927.47	Held events to increase public awareness about the importance of early childhood	FY00-0 FY01-1 FY02-3	Provided an increase awareness of the importance of early childhood development

Every Child Reads	\$687.13	Support of Every Child Reads Team	7 trainers provided three sessions of trainings for providers.	36 child care staff & in-home providers were trained in the Every Child Reads curriculum
Professional Development	\$15,000			
In-home Provider Assistance  *	\$37,922-Empowerment \$2,500-Other funds	Contract with Child Care Resource and Referral	Increase the number of registered child care homes. Baseline FY02 -252 registered homes FY03-266 registered homes -152 contacts -97 packets sent out -70 providers registered this year	10% of providers in registration compliance
Health Consultant	\$48,000-???? (survey questions?)	Contract with Siouxland District Health to fund .7 FTE.	Provided health education information to early childhood providers -53 Trainings to 631 providers -201 Phone Contacts-Home providers -164 Phone Contacts-Centers -90 Center site contacts -50 Home Provider site contacts	In-home and center based child care providers were trained concerning health care, home safety and nutrition information.
Early Childhood Coordinator	\$38,200			
Hud Transportation Grant	\$1,000			

**SECTION VI – Achieving Results**

If you had one key community-wide indicator or performance measure that would best tell the story of how your Community Empowerment Area is making a difference, what would it be? Please include:

**State Result Area:**

Secure and Nurturing Child Care Environments

**Local Identified Need/Priority:**

Increase the number of accredited child care centers  
 Increase the number of registered child care homes

**Goal:**

Increase access to affordable, quality child care/early education environments

<b>Local Community-Wide Indicator(s) (Baseline and Trend)</b>	2000	2001	2002	2003		
Number of accredited child care centers	5	5	5	6		
Number of registered child care homes			252	266		

\* Based on projected growth needed to attain the 20% increase.

**Partners:**

Siouxland District Health, Department, Resource Centers, Child care centers and in-home providers

**Strategy (ies):**

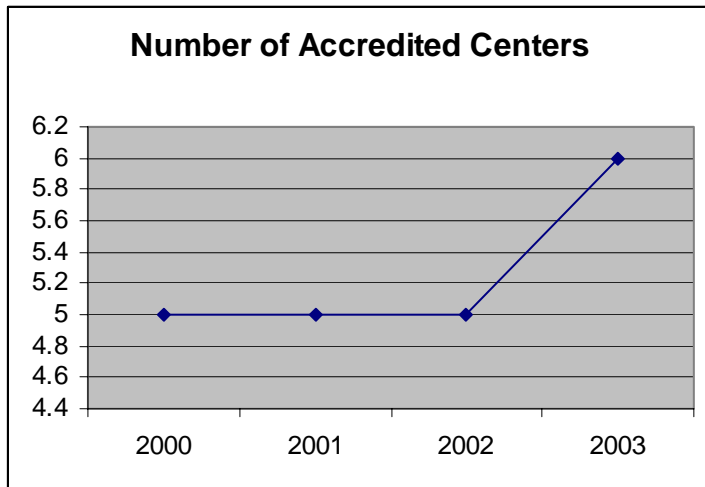
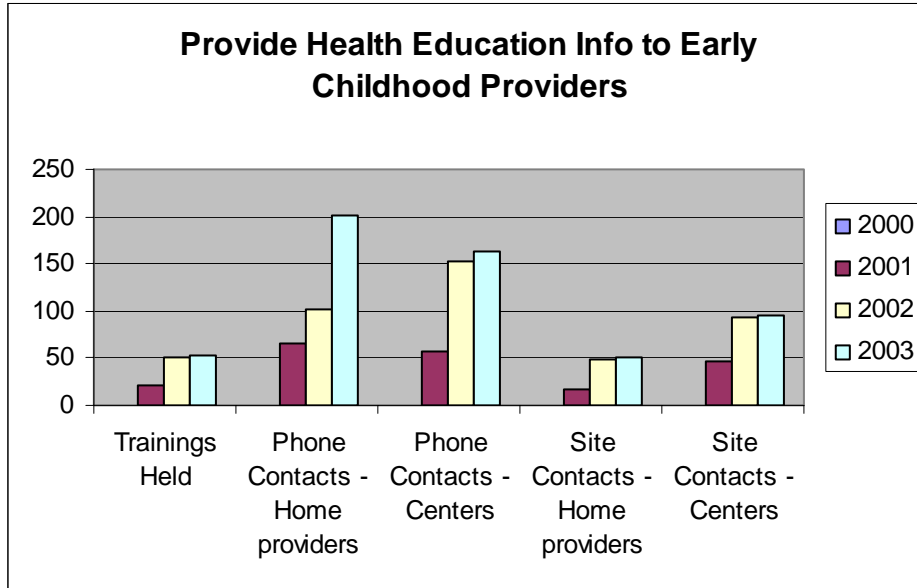
Part-time child care consultant will provide education to promote and assist child care registration in an effort to promote quality early childhood care and learning environments.

<b>Performance Measure(s) (Baseline and Trend)</b>	2000	2001	2002	2003		
Number of trainings held	0	22	50	53		
Number of phone contacts to home providers	0	65	101	201		
Number of phone contact to centers	0	58	153	164		
Number of home visits	0	17	49	50		
Number of center visits	0	46	93	95		

**The Story About the Data:**

The Local Community Empowerment Area is wanting to improve the availability and quality of early child care environments. One component is the availability of registered child care homes. We contracted with the Siouxland District Health Department to provide for a child care consultant to identify and work with child care home providers.

**Graph of Community-Wide Indicator or Performance Measure (Optional):**



**SECTION VII – Annual Financial Report: Early Childhood**

	<b>FY99</b>	<b>FY00</b>	<b>FY01</b>	<b>FY02</b>	<b>FY03</b>
<b>Early Childhood</b>					
<b>Revenues</b>					
Community Empowerment Grant Award	N/A	\$158,540	\$278,190	\$277,588	\$290,166
Administration (not to exceed 5% of grant award)	N/A	\$7,927	\$13,910	\$13,879	\$14,508
Brought Forward – Admin. Funds	N/A	N/A	N/A	N/A	N/A
<b>Total Administration Budget</b>		<b>\$7,927</b>	<b>\$13,910</b>	<b>\$13,879</b>	<b>\$14,508</b>
Program/Service Funds	N/A	\$150,613	\$264,280	\$263,709.00	\$275,658
Interest	N/A	\$0	\$16,359.84	\$5,861.94	\$560.35
Brought Forward – Program/Service Funds	N/A	\$0	\$50,505.10	\$157,295.85	\$61,773.97
<b>Total Program/Service Budget</b>	<b>N/A</b>	<b>\$150,613</b>	<b>\$331,144.94</b>	<b>\$426,866.79</b>	<b>\$337,992.32</b>
<b>Expenditures</b>					
Administration (Line Items)					
• D&O Insurance	N/A	\$722.19	\$1,180.81	\$3,225	\$0
• Accountant	N/A	\$1,250	\$3,000	\$3,000	\$3,600
• Audit	N/A	\$0	\$3,000	\$0	\$3,700
• Liability Insurance	N/A	\$0	\$0	\$1,329	\$1,800
• Supplies	N/A	\$1,900	\$2,128.19	\$2,000	\$1,092
• Staff Support	N/A	\$4,054.81	\$4,600	\$4,325	\$4,316
<b>Total Administrative Expenses</b>	<b>N/A</b>	<b>\$7,927</b>	<b>\$13,909</b>	<b>\$13,879</b>	<b>\$14,508</b>
Program/Service (Line Items)					
• Child Care Scholarships	N/A	\$0	\$159,337.58	\$183,229.50	\$182,551.33
• Professional Development	N/A	\$11,423	\$10,511.51	\$32,731.35	\$12,000
• Accreditation	N/A	\$9,955.47	\$0	\$5,864.75	\$0
• Infant Care – Center Based	N/A	\$15,000	\$0	\$25,000	\$19,514
• Extended Day Care	N/A	\$31,739	\$0	\$32,000	\$27,541
• In-home health Consultant	N/A	\$24,950.43	\$0	\$49,962.33	\$0
• Nutrition Program	N/A	\$7,040	\$0	\$4,000	\$2,000
• In Home Provider Infant Care Assist.	N/A	\$0	\$0	\$12,304.89	\$25,000
• In Home Provider Assistance	N/A	\$0	\$0	\$20,000	\$0
• Licensing	N/A	\$0	\$4,000	\$0	\$0
• Training	N/A	\$0	\$0	\$0	\$21,410.12
<b>Total Program/Service Expenses</b>	<b>N/A</b>	<b>\$100,107.90</b>	<b>\$173,849.09</b>	<b>\$365,092.82</b>	<b>\$290,016.45</b>
<b>Total Expended</b>	<b>N/A</b>	<b>\$108,034.90</b>	<b>\$187,759.09</b>	<b>\$378,971.82</b>	<b>\$304,524.45</b>
Carry Forward Admin. Funds	N/A	\$0	0	\$0	\$0
Carry Forward Program/Service Funds	N/A	\$50,505.10	\$157,295.85	\$61,773.97	\$47,975.87

**SECTION VIII – Annual Financial Report: School Ready**

	<b>FY99</b>	<b>FY00</b>	<b>FY01</b>	<b>FY02</b>	<b>FY03</b>
<b>School Ready</b>					
<b>Revenues</b>					
Community Empowerment Grant Award	N/A	N/A	\$340,745	\$428,034	\$428,034
Administration (up to 3% of grant award, not to exceed \$60,000)	N/A	N/A	\$10,222	\$12,841.00	\$12,841
Brought Forward – Admin. Funds	N/A	N/A	0	\$0	\$0
Total Administration Budget	N/A	N/A	\$10,222	\$12,841.00	\$12,841
Program/Service Funds	N/A	N/A	\$330,523	\$415,193	\$415,193
Interest	N/A	N/A	\$7,295.68	\$5,245.55	\$1,949.73
Brought Forward – Program/Service Funds	N/A	N/A	\$0	\$68,390.82	\$105,915.16
Total Program/Service Budget	N/A	N/A	\$337,818.68	\$488,829.37	\$523,057.89
<b>Expenditures</b>					
Administration (Line Items)					
• Staff Support	N/A	N/A	\$4,786	\$6,841	\$7,341
• Postage	N/A	N/A	\$500	\$1,500	\$1,000
• Mileage & Expenses	N/A	N/A	\$2,500	\$1,500	\$2,000
• Contract Services (Facilitation)	N/A	N/A	\$936	\$1,000	\$2,500
• Supplies	N/A	N/A	\$1,500	\$2,000	\$0
Total Administrative Expenses	N/A	N/A	\$10,222	\$12,841	\$12,841
Program/Service (Line Items)					
• Resource Centers		N/A	\$207,918.08	\$221,827.39	\$203,066.16
• In-Home Nutrition		N/A	\$3,000	\$0	\$0
• HOPES		N/A	\$40,523	\$45,000	\$54,000
• Public Awareness		N/A	\$2,986.78	\$8,985.39	\$27,927.47
• Empowerment Coordinator		N/A	\$15,000	\$35,514	\$38,200
• Oral Health	N/A	N/A	\$0	\$50,000	\$55,598.75
• Every Child Reads	N/A	N/A	\$0	\$629.16	\$789.99
• In Home Provider Assistance	N/A	N/A	\$0	\$4,327.95	\$37,922
• Pre-school Expansion	N/A	N/A	\$0	\$5,421.18	\$0
• Educational Programming for Parents	N/A	N/A	\$0	\$7,000	\$0
• Books for Babies		N/A	\$0	\$4,209.14	\$0
• Child Care Health Consultant	N/A	N/A	N/A	N/A	\$48,000
• Professional Development	N/A	N/A	N/A	N/A	\$15,000
• Transportation	N/A	N/A	N/A	N/A	\$1,000
Total Program/Service Expenses	N/A	N/A	\$269,427.86	\$382,914.21	\$481,504.37
Total Expended	N/A	N/A	\$279,649.86	\$395,755.21	\$494,345.37
Carry Forward Admin. Funds	N/A	N/A	0	\$0	\$0
Carry Forward Program/Service Funds	N/A	N/A	\$68,390.82	\$105,915.16	\$41,553.52

**SECTION X –Other Community Investment and Support**

Identify and briefly describe other funding or support (as appropriate) the community empowerment area has been successful in obtaining and applying toward the community plan. Identify in-kind or cash amount of those sources that come directly to and those that flow through the community empowerment area.

Other Funding To Support Community Plan	Cash and Source	In-Kind Value and Source
Administration	Woodbury County Board of Supervisors-\$15,000	
Administration	Woodbury County Decat-\$20,000	
Administration	Siouxland District Health-\$5,000	
Administration	JAIBG Grant-CJJP-\$20,383	
Administration	Juvenile Court Services-10,000	
Administration		Western Hills AEA-\$3,000 printing
Administration		Western Hills AEA-Office space & phone
Administration		Grant review team of 8 volunteers have donated time for 4RFP reviews including reading, scoring, discussions and recommendations